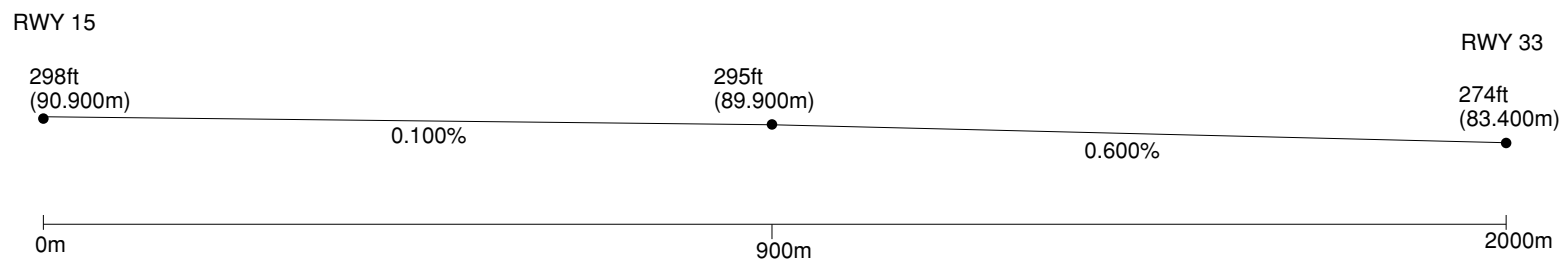


REMARKS: RUNWAY GROOVING	2000m×30m
RUNWAY STRENGTH	45/F/B/X/T
WIDTH & STRENGTH OF TAXIWAY	
S-T	30m 42/F/A/X/T
N-T	9m AUW 5700kg / 0.28MPa
DIMENSION & STRENGTH OF APRON	
SOUTH	95mX155m 52/R/B/X/T
NORTH	54mX 70m AUW 5700kg / 0.28MPa

LONGITUDINAL PROFILE OF RUNWAY



STANDARD DEPARTURE CHART - INSTRUMENT

RJBD / NANKI-SHIRAHAMA

SID

NANKI REVERSAL TWO DEPARTURE

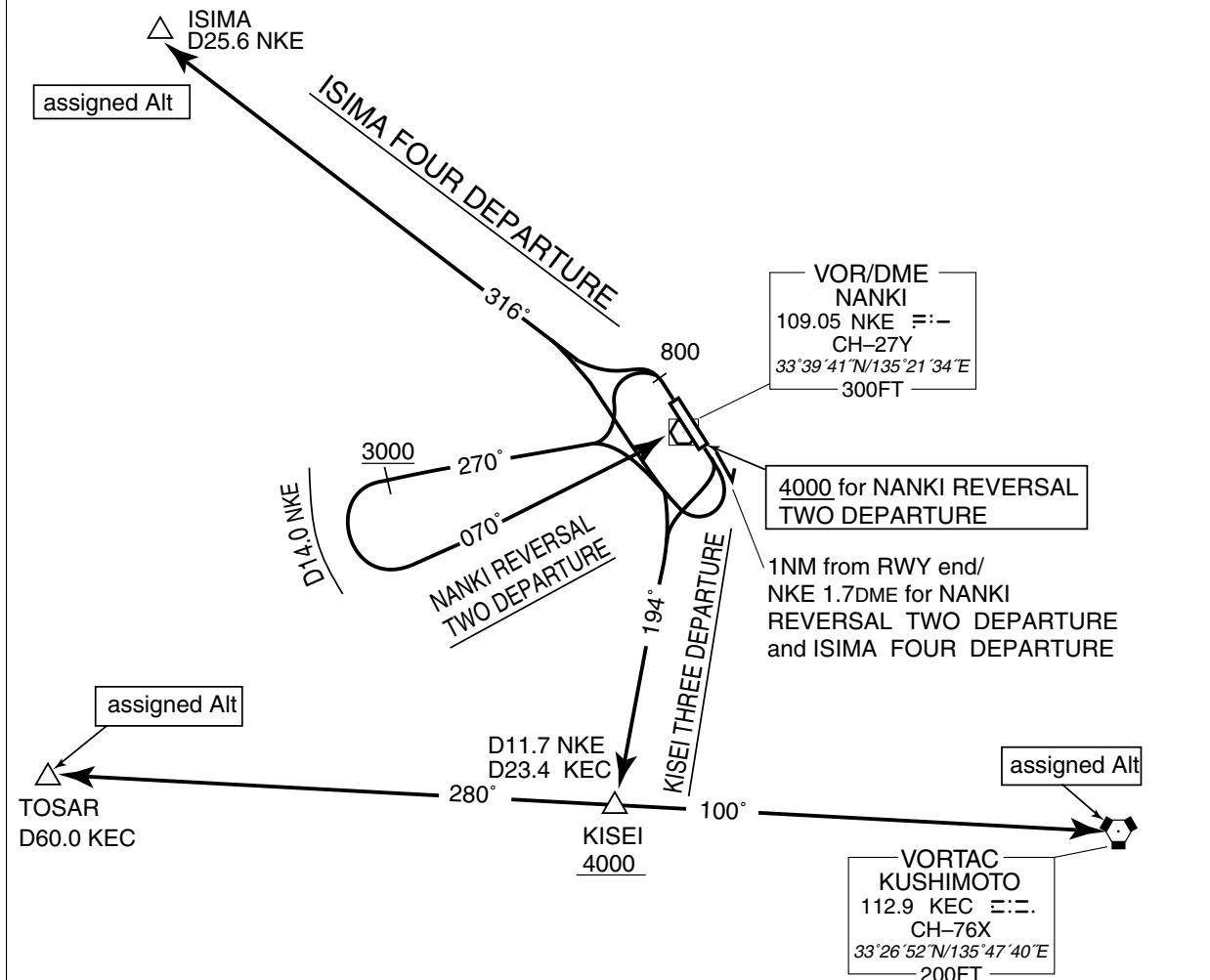
RWY 33: Climb RWY HDG to 800FT, turn left, ...
 RWY 15: Climb RWY HDG until 1NM from RWY end/NKE 1.7DME, turn right, ...
 ...via NKE R270 to 3000FT, turn left, via NKE R250 to NKE VOR/DME within
 NKE 14.0DME.
 Cross NKE VOR/DME at or above 4000FT.

KISEI THREE DEPARTURE

RWY 33: Climb RWY HDG to 800FT, turn left, ...
 RWY 15: Turn right, ...
 ...via NKE R194 to KISEI, via KEC R280 to TOSAR or via KEC R280 to KEC
 VORTAC.
 Cross KISEI at or above 4000FT and cross TOSAR or KEC VORTAC at assigned
 altitude.

ISIMA FOUR DEPARTURE

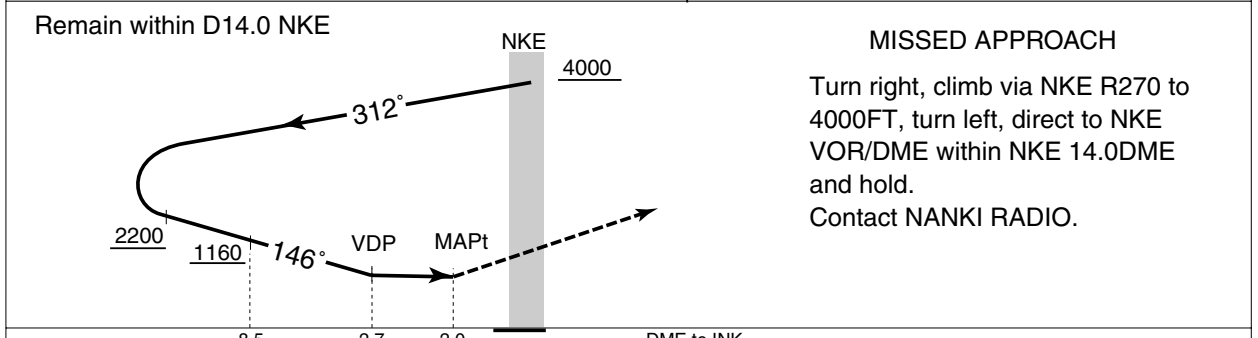
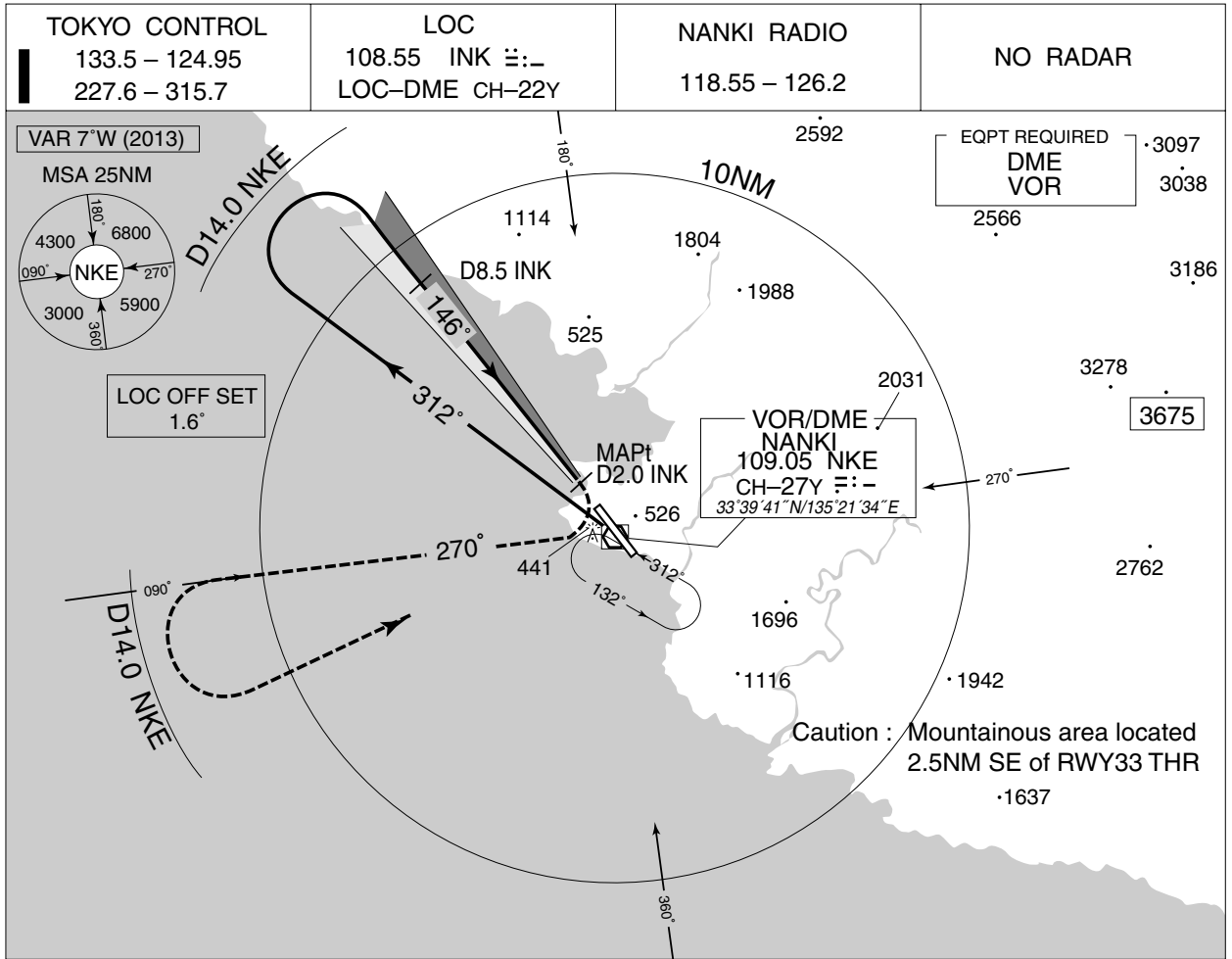
RWY 33: Climb RWY HDG to 800FT, turn left, ...
 RWY 15: Climb RWY HDG until 1NM from RWY end/NKE 1.7DME, turn right, ...
 ...via NKE R316 to ISIMA.
 Cross ISIMA at assigned altitude.



INSTRUMENT APPROACH CHART

RJBD / NANKI-SHIRAHAMA

LOC RWY15



MINIMA		THR elev. 298	AD elev. 293	
CAT	CIRCLING			
	MDA(H)	CMV	MDA(H)	VIS
	A	1000	840 (547)	1600
	B	780 (487)		1200
C		1600	1160 (867)	3200
D				

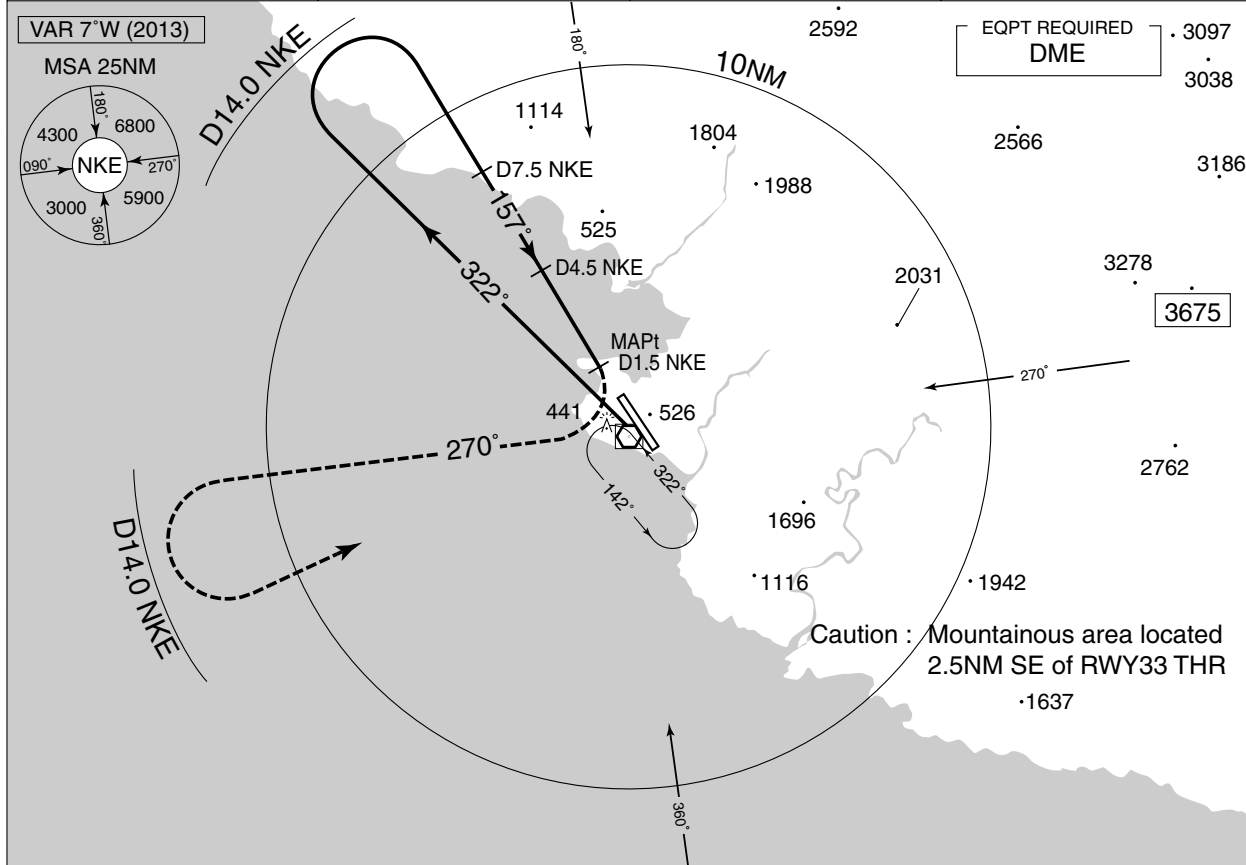
Circling to WEST side of RWY only.

INSTRUMENT APPROACH CHART

RJBD / NANKI-SHIRAHAMA

VOR RWY15

TOKYO CONTROL 133.5 – 124.95 227.6 – 315.7	NANKI VOR/DME 109.05 NKE CH-27Y 𠄎:- 33°39'41"N/135°21'34"E	NANKI RADIO 118.55 – 126.2	NO RADAR
--	---	-------------------------------	----------



Remain within D14.0 NKE

MISSED APPROACH

Turn right, climb via NKE R270 to 4000FT, turn left, direct to NKE VOR/DME within NKE 14.0DME and hold.
Contact NANKI RADIO.

MINIMA		THR elev. 298	AD elev. 293	
CAT	CIRCLING			
	MDA(H)	CMV	MDA(H)	VIS
A	780 (487)	1000	840 (547)	1600
B		1200		2400
C		1600	1160 (867)	3200
D				

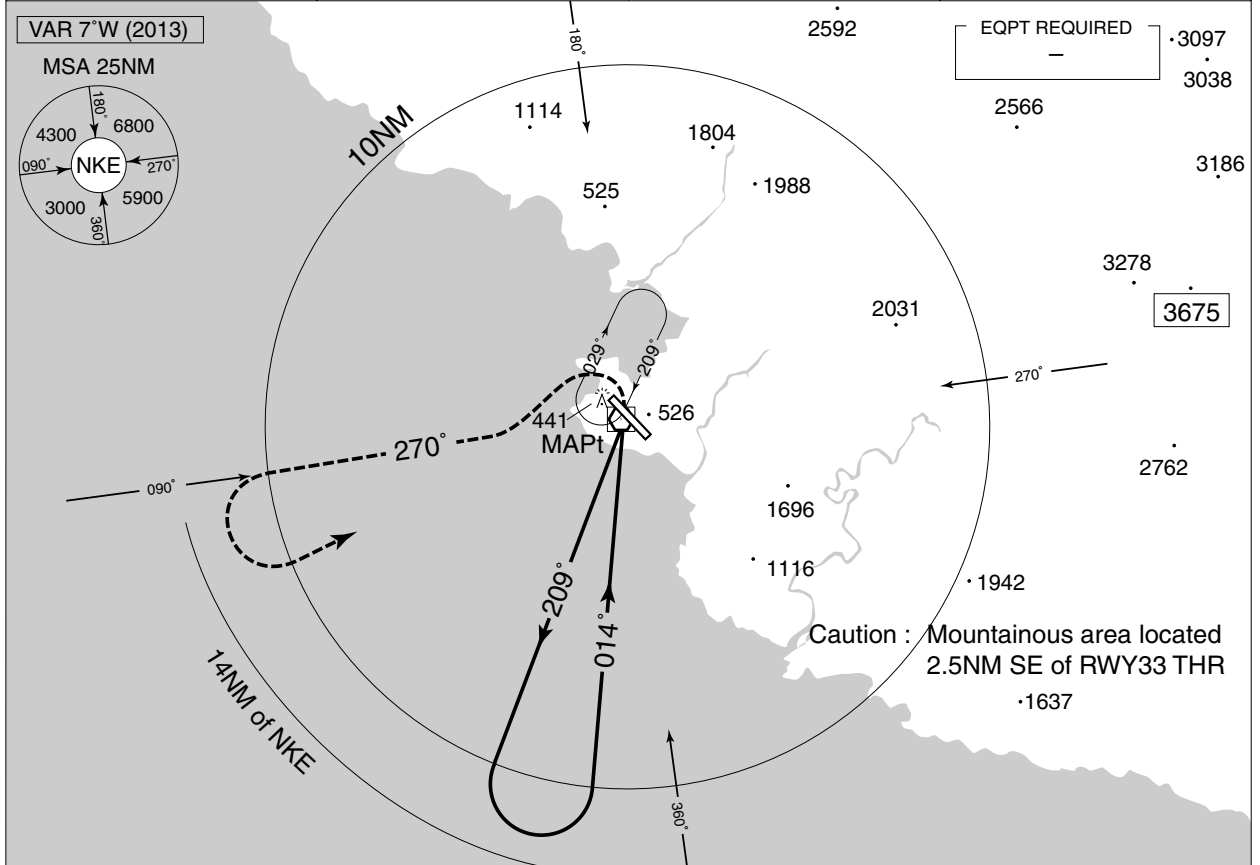
Circling to WEST side of RWY only.

INSTRUMENT APPROACH CHART

RJBD / NANKI-SHIRAHAMA

VOR A

TOKYO CONTROL 133.5 – 124.95 227.6 – 315.7	NANKI VOR/DME 109.05 NKE CH-27Y 𠄎:- 33°39'41"N/135°21'34"E	NANKI RADIO 118.55 – 126.2	NO RADAR
--	---	-------------------------------	----------



MISSED APPROACH
Turn left, climb via NKE R270 to 4000FT, turn left, direct to NKE VOR within 14NM of NKE VOR and hold.
Contact NANKI RADIO

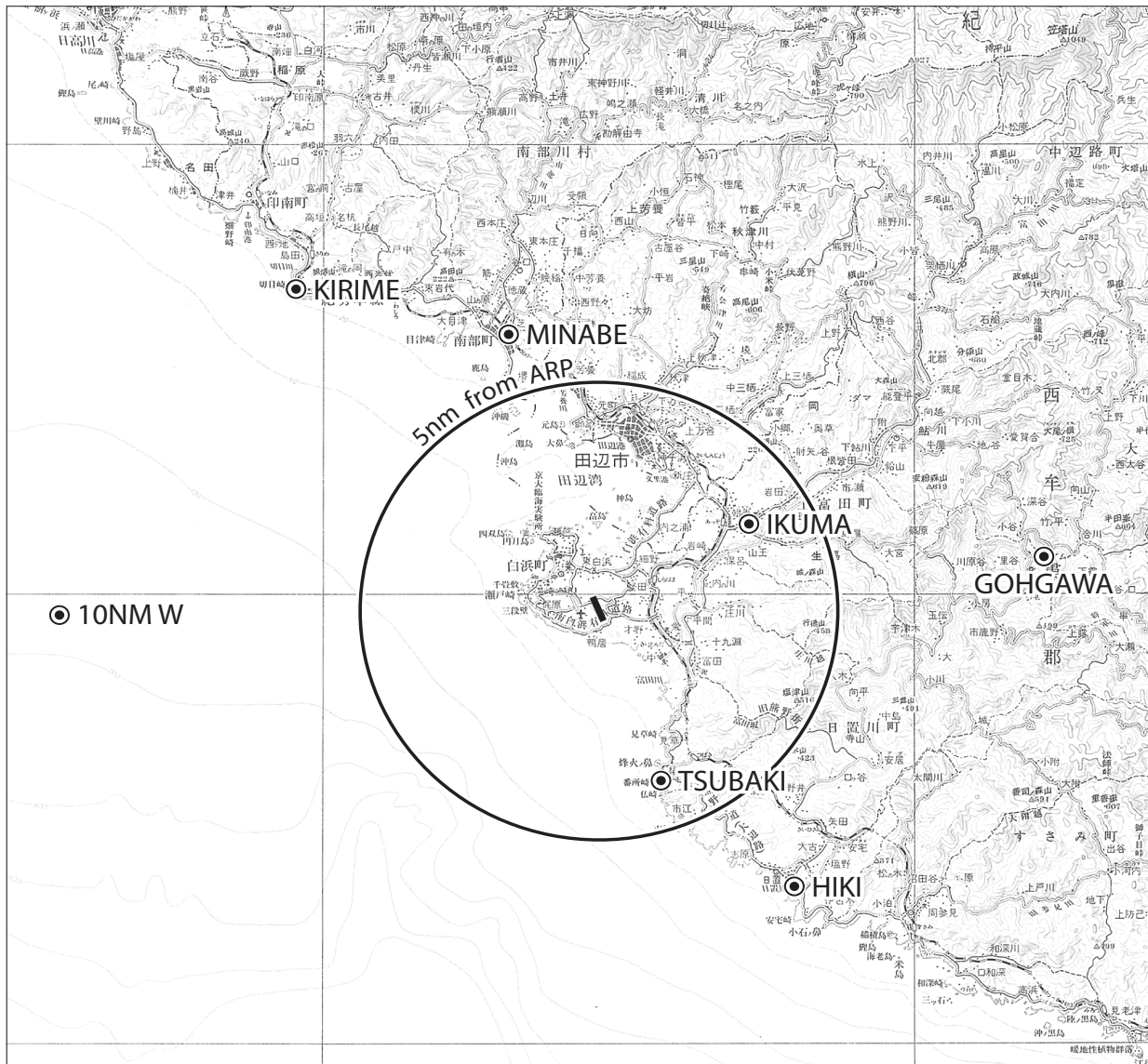
Remain within 14NM of NKE

MINIMA		AD elev. 293
CAT	CIRCLING	
	MDA(H)	VIS
A	840 (547)	1600
B		2400
C		3200
D	1160 (867)	

Circling to WEST side of RWY only.

RJBD/NANKI-SHIRAHAMA

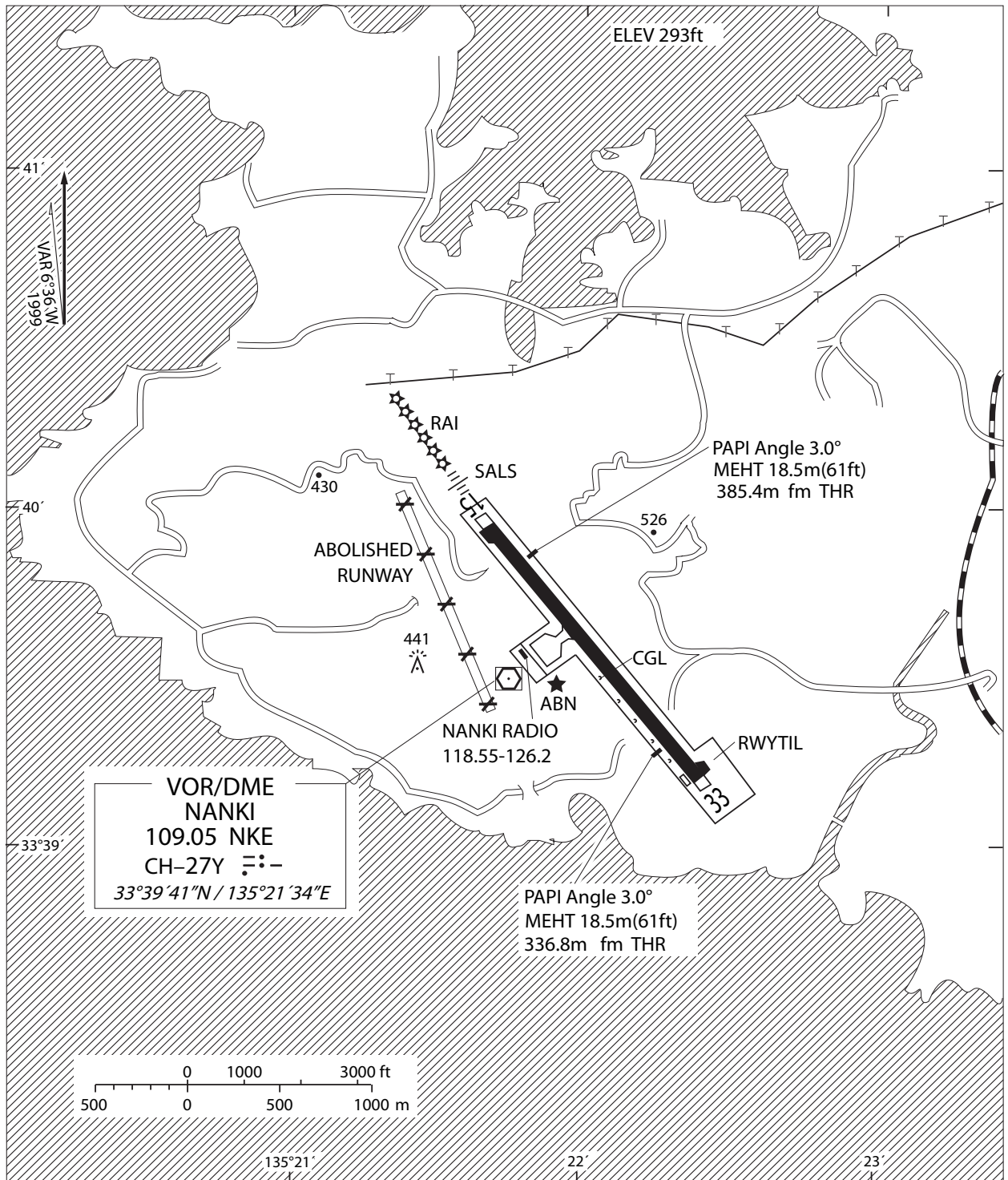
Visual REP



Call sign	BRG / DIST from ARP	Remarks
切目 Kirime	325°/9.5NM	岬 Cape
南部 Minabe	349°/6.5NM	JR駅 Station
10NM W	270°/10.0NM	海上 Over the sea
合川 Gohgawa	090°/10.0NM	ダム Dam
椿 Tsubaki	167°/4.0NM	高層ビル High Building
日置 Hiki	149°/7.0NM	日置川河口中州 River-mouth
生馬 Ikuma	072°/4.0NM	橋 Truss-bridge

RJBD/NANKI-SHIRAHAMA

LDG CHART



注：南紀白浜空港の西側に廃止された滑走路が（なお、禁止標識が5カ所設置されている）視認できる状態にあるので、南紀白浜空港に着陸する航空機は当該滑走路と誤認しないように注意すること。

NOTE : There is remained the abolished runway with 5 cross[×] markings at west side of Nanki-Shirahama Airport. As the abolished runway in shape is visible, the aircraft which will land on Nanki-Shirahama Airport shall pay a special attention not to confuse the runway.